

CLIMATE CHANGE

Infectious Diseases & Mental Health

Dr Mary Mincer Hansen

Adjunct Professor - DMU MPH Program
Adjunct Associate Professor - DMU Global
Health Dept

Dr Yogi Shah

Associate Dean - DMU Global Health Dept



Climate change
Temperature
Precipitation
Humidity

Ticks

Lyme

Vectors

Infectious Disease

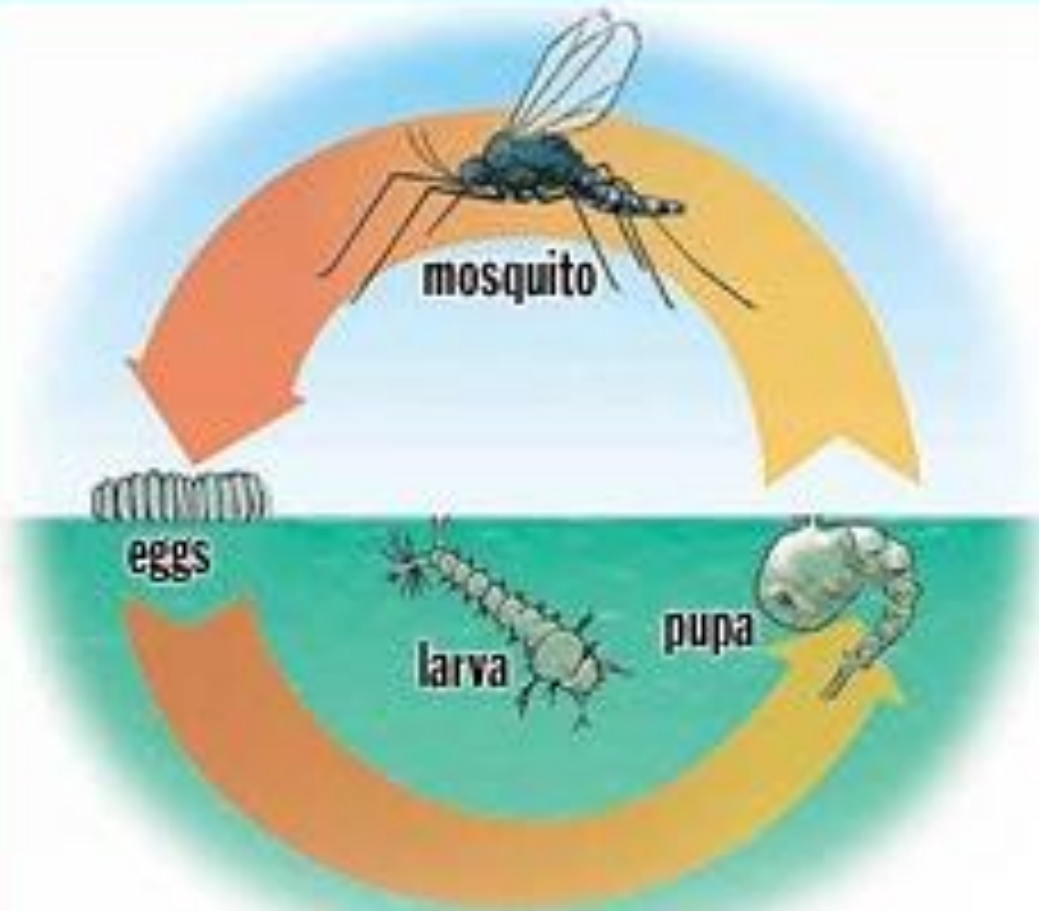
Mosquitoes

Malaria

Dengue

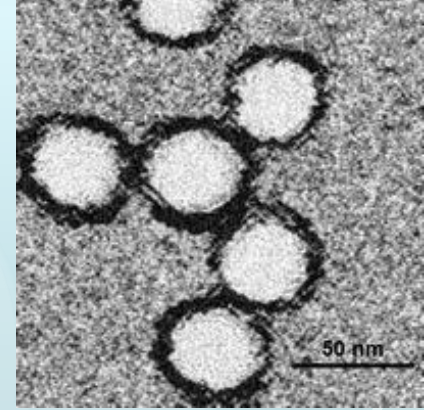
Chikungunya

West Nile Virus



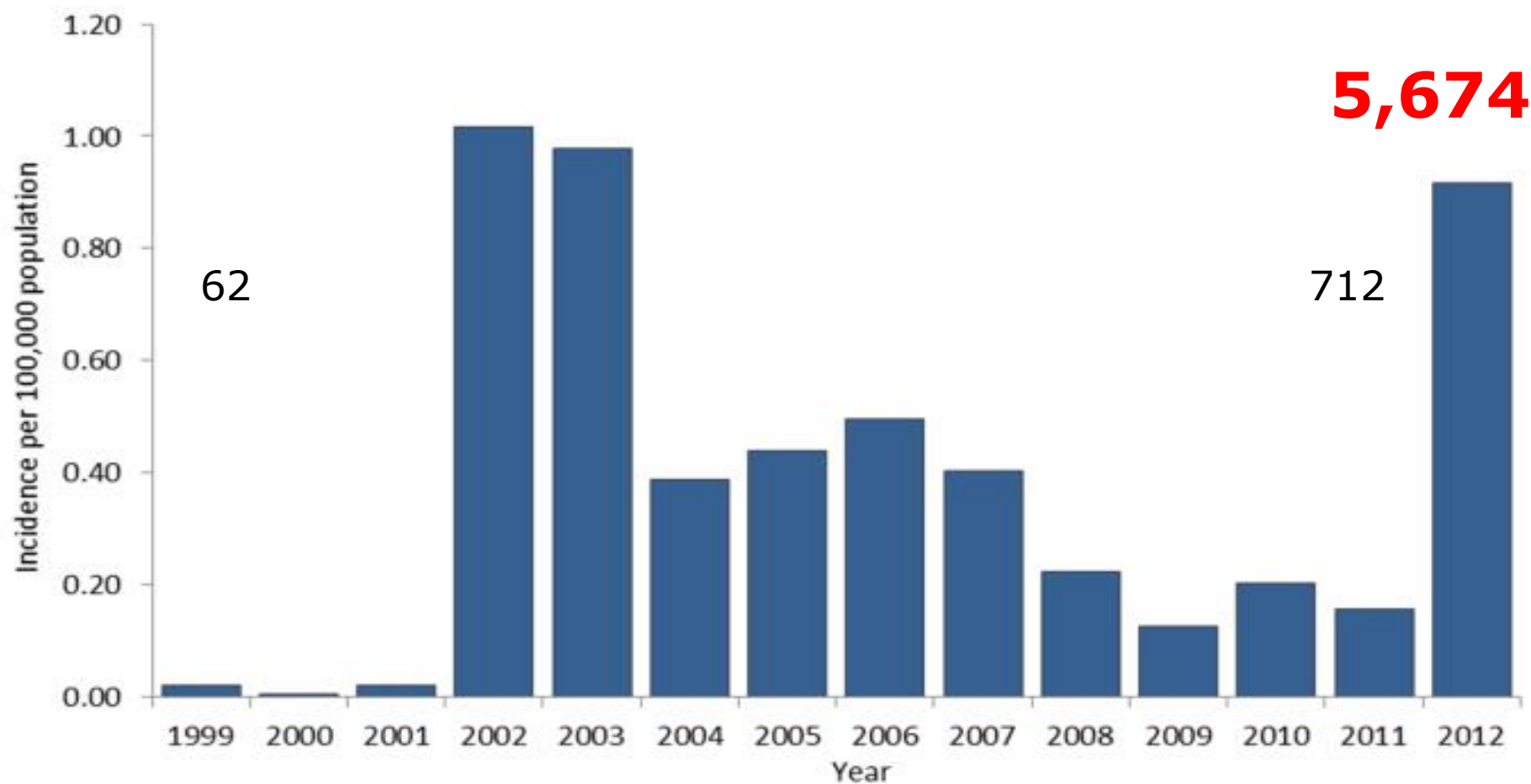
"Mosquitoes take about 7 days to complete life history. The first three stages: eggs, larva and pupa are aquatic."

Temp. dependent



West Nile Virus Disease

West Nile virus neuroinvasive disease incidence reported to CDC by year, 1999-2012





WNV - IOWA

- 44 cases in 2013
 - 42% increase from 2012
 - 390% increase from 2011

MENTAL HEALTH ISSUES

- ❖ **Increased Violence**
- ❖ **Anxiety**
- ❖ **Depression**
- ❖ **PTSD**



Minnesota Department of Health

- **Climate and Health**

Changes occurring in Minnesota's climate are affecting our health and wellbeing and will have even greater impacts in the future. The MN Climate and Health Program is helping to understand these impacts and prepare local public health and the public for the health risks.

-

Topic Areas:

[Climate Change 101](#)

How climate change is impacting MN.

[Water Quality and Quantity](#)

Effects of changes in precipitation.

[Vector-Borne Diseases](#)

Climate change impacts on vector-borne diseases.

[Mental Health](#)

Climate change impacts on sense of place, disasters, and loss.

[Health and Climate Video](#)

Watch the video and find resources for teachers.

[Extreme Heat Events](#)

Extreme Heat Toolkit, maps, and more.

[Air Quality](#)

Climate change impacts on air pollutants.

[Agriculture and Food Security](#)

Climate change impacts on food production and security.

[Planning Tools & Data](#)

Public health data on climate change impacts.

[Sign up for email updates](#)